



# YOUR GATEWAY TO "MADE IN INDIA" SHIPPING CONTAINERS

ISO SHIPPING CONTAINERS | FREIGHT CONTAINERS | DRY BULK  
CONTAINERS | GENERAL PURPOSE DRY CARGO CONTAINERS |  
RENEWABLE ENERGY CONTAINERS | LOGISTIC PRODUCTS

 + 91 999811007  [info@symcon.in](mailto:info@symcon.in)

  
**SYMCON**<sup>®</sup>

[www.symcon.in](http://www.symcon.in)

# SYMCON CAPABILITIES

## 20 FEETERS

- 20' STD DRYVAN
- 20' STD HEAVY DUTY
- 20' HIGH CUBE

## 40 FEETERS

- 40' STD
- 40' HIGH CUBE
- 40' HIGH CUBE HEAVY DUTY

## CUSTOMIZED

- 20' HIGH CUBE SIDE ACCESS
- 20' OPEN TOP
- 20' STD FULL ACCESS
- 20' HIGH CUBE FULL ACCESS
- 20' DRY BULK | GRAIN CONTAINER
- 20' FLAT RACK
- 20' PLATFORM

## CUSTOMIZED

- 20' GANTRY CRANE
- 40' OPEN TOP GROOVE CONTAINER
- 40' HIGH CUBE MULTIPURPOSE (COIL+GP) CONTAINER
- 40' OPEN TOP
- 40' HIGH CUBE FULL ACCESS
- 40' FLAT RACK
- 40' PLATFORM



+ 91 999811007



info@symcon.in



www.symcon.in



# 20 FEETERS

**20' STD  
DRYVAN**

**MGW : 30480 KGS**  
**TARE : 2150 KGS**  
**PAYLOAD : 28330 KGS**

**20' STD  
HEAVY  
DUTY**

**MGW : 32500 KGS**  
**TARE : 2300 KGS**  
**PAYLOAD : 30200 KGS**

**20'HIGH  
CUBE**

**MGW : 30480 KGS**  
**TARE : 2300 KGS**  
**PAYLOAD : 28180 KGS**



+ 91 999811007



info@symcon.in



www.symcon.in



# 40 FEETERS

## 40' STD

**MGW : 30480 KGS**

**TARE : 3650 KGS**

**PAYLOAD : 26830 KGS**

## 40' HIGH CUBE

**MGW : 30480 KGS**

**TARE : 3750 KGS**

**PAYLOAD : 26730 KGS**

## 40' HEAVY CUBE HEAVY DUTY

**MGW : 32500 KGS**

**TARE : 3900 KGS**

**PAYLOAD : 28600 KGS**

**ECONSHIP**



+ 91 999811007



info@symcon.in



www.symcon.in

**ECONSHIP**



# CUSTOMIZED

## 20' HIGH CUBE SIDE ACCESS

**MGW : 36500 KGS**

**TARE : 3150 KGS**

**PAYLOAD : 33350 KGS**

**DOORS : 1 DOOR EACH  
ON BOTH SIDES &  
1 READ DOOR (3 DOORS)**

## 20' OPEN TOP

**MGW : 30480 KGS**

**TARE : 2000 KGS**

**PAYLOAD : 28480 KGS**

**ROOF : OPEN TOP**

## 20' STD FULL ACCESS

**MGW : 30480 KGS**

**TARE : 2350 KGS**

**PAYLOAD : 28130 KGS**

**DOORS : FULL ACCESS**

**ON BOTH SIDES**

## 20' HIGH CUBE FULL ACCESS

**MGW : 30480 KGS**

**TARE : 2450 KGS**

**PAYLOAD : 28030 KGS**

**DOORS : FULL ACCESS**

**ON BOTH SIDES**

## 20' DRY BULK | GRAIN CONTAINER

**MGW : 24000 KGS**

**TARE : 2450 KGS**

**LOADING HATCHES : 03 NOS. ON  
THE ROOF**

**DIA OF HATCHES : 455MM APPROX.**

**DISTANCE OF HATCHES : 1.83M  
(CENTER TO CENTER)**

**DISCHARGE HATCHES : 02 NOS. ON  
THE REAR DOOR**

## 20' FLAT RACK

**MGW : 24000 KGS**

**TARE : 2500 KGS**

**PAYLOAD : 21500 KGS**

**END WALLS : FIXED |  
COLLAPSIBLE**

**FORKLIFT POCKETS :  
WITH & W/O**

## 20' PLATFORM

**MGW : 30480 KGS**

**TARE : 2520 KGS**

**PAYLOAD : 27960 KGS**

## 20' GANTRY CRANE

**MGW : 30480 KGS**

**TARE : 4600 KGS**

**PAYLOAD : 25880 KGS**

**GANTRY CRANE : 1 TON  
DOORS: STANDARD REAR  
DOOR + FULL ACCESS SIDE  
DOOR (1 SIDE)**



+ 91 999811007



info@symcon.in



www.symcon.in



# CUSTOMIZED

## 40' GROOVE CONTAINER

MGW : 63000 KGS

TARE : 6500 KGS

PAYLOAD : 56500 KGS

APPLICATION : COIL TRANSPORTATION | CONTAINER TRAIN OPERATION

## 40' HIGH CUBE MULTIPURPOSE (COIL+GP) CONTAINER

MGW : 72000KGS

TARE : 6500KGS

PAYLOAD : 65500 KGS

APPLICATION: coil TRANSPORTATION | GENERAL PURPOSE DRY CARGO | CONTAINER TRAIN OPERATION

## 40' OPEN TOP

MGW : 30480 KGS

TARE : 3800 KGS

PAYLOAD : 26680 KGS

ROOF: OPEN TOP

## 40' HIGH CUBE FULL ACCESS

MGW : 24000 KGS

TARE : 5800 KGS

PAYLOAD : 18200 KGS

DOORS : FULL ACCESS ON BOTH SIDES

## 40' FLAT RACK

MGW : 45000 KGS

TARE : 4200 KGS

PAYLOAD : 40800 KGS

## 40' PLATFORM

MGW : 45000 KGS

TARE : 5700 KGS

PAYLOAD : 39300KGS



+ 91 999811007



info@symcon.in



www.symcon.in



# 20' STD DRYVAN



<b>INTERNAL</b>	<b>LENGTH</b>	5867mm
	<b>WIDTH</b>	2330mm
	<b>HEIGHT</b>	2350mm
<b>EXTERNAL</b>	<b>LENGTH</b>	6058mm
	<b>WIDTH</b>	2438mm
	<b>HEIGHT</b>	2591mm
<b>CAPACITY</b>	<b>VOLUME</b>	33.1 cum
	<b>TARE</b>	2150 Kgs
	<b>GROSS</b>	30480 Kgs
	<b>PAYLOAD</b>	28330 Kgs

## **NOTES**

- (1). Tolerance range for each dimension & rating as per ISO 668 Standards
- (2). Multiple Door Opening Options can be made available as per customer's requirement
- (3). Specification and Testing as per ISO 1496-1 Series 1 Freight Containers - Part 1: General Cargo Containers for General Purposes
- (4). Higher Gross Weight Containers can be made available up to 36000 Kgs. as per customer's requirement
- (5). Custom made containers can be made available as per customer's specific requirement



+ 91 999811007



info@symcon.in



www.symcon.in



# 20' STD HEAVY DUTY



<b>INTERNAL</b>	<b>LENGTH</b>	5867mm
	<b>WIDTH</b>	2330mm
	<b>HEIGHT</b>	2350mm
<b>EXTERNAL</b>	<b>LENGTH</b>	6058mm
	<b>WIDTH</b>	2438mm
	<b>HEIGHT</b>	2591mm
<b>CAPACITY</b>	<b>VOLUME</b>	33.1 cum
	<b>TARE</b>	2300 Kgs
	<b>GROSS</b>	32500 Kgs
	<b>PAYLOAD</b>	30200 Kgs

## **NOTES**

- (1). Tolerance range for each dimension & rating as per ISO 668 Standards
- (2). Multiple Door Opening Options can be made available as per customer's requirement
- (3). Specification and Testing as per ISO 1496-1 Series 1 Freight Containers - Part 1: General Cargo Containers for General Purposes
- (4). Higher Gross Weight Containers can be made available up to 36000 Kgs. as per customer's requirement
- (5). Custom made containers can be made available as per customer's specific requirement



+ 91 999811007



info@symcon.in



www.symcon.in





# 20 FEET HIGH CUBE



<b>INTERNAL</b>	<b>LENGTH</b>	5867mm
	<b>WIDTH</b>	2330mm
	<b>HEIGHT</b>	2655mm
<b>EXTERNAL</b>	<b>LENGTH</b>	6058mm
	<b>WIDTH</b>	2438mm
	<b>HEIGHT</b>	2896mm
<b>CAPACITY</b>	<b>VOLUME</b>	37.30 cum
	<b>TARE</b>	2300 Kgs
	<b>GROSS</b>	30480 Kgs
	<b>PAYLOAD</b>	28180 Kgs

## **NOTES**

- (1). Tolerance range for each dimension & rating as per ISO 668 Standards
- (2). Multiple Door Opening Options can be made available as per customer's requirement
- (3). Specification and Testing as per ISO 1496-1 Series 1 Freight Containers - Part 1: General Cargo Containers for General Purposes
- (4). Higher Gross Weight Containers can be made available up to 36000 Kgs. as per customer's requirement
- (5). Custom made containers can be made available as per customer's specific requirement



+ 91 999811007



info@symcon.in



www.symcon.in



# 40' STD



<b>INTERNAL</b>	<b>LENGTH</b>	11998mm
	<b>WIDTH</b>	2330mm
	<b>HEIGHT</b>	2350mm
<b>EXTERNAL</b>	<b>LENGTH</b>	12192mm
	<b>WIDTH</b>	2438mm
	<b>HEIGHT</b>	2591mm
<b>CAPACITY</b>	<b>VOLUME</b>	67.72 cum
	<b>TARE</b>	3650 KGs
	<b>GROSS</b>	30480 Kgs
	<b>PAYLOAD</b>	26830 Kgs

## **NOTES**

- (1). Tolerance range for each dimension & rating as per ISO 668 Standards
- (2). Multiple Door Opening Options can be made available as per customer's requirement
- (3). Specification and Testing as per ISO 1496-1 Series 1 Freight Containers - Part 1: General Cargo Containers for General Purposes
- (4). Higher Gross Weight Containers can be made available up to 36000 Kgs. as per customer's requirement
- (5). Custom made containers can be made available as per customer's specific requirement



+ 91 999811007



info@symcon.in



www.symcon.in



# 40' HIGH CUBE



INTERNAL	LENGTH	11998mm
	WIDTH	2330mm
	HEIGHT	2350mm
EXTERNAL	LENGTH	12192mm
	WIDTH	2438mm
	HEIGHT	2591mm
CAPACITY	VOLUME	67.72 cum
	TARE	3650 KGs
	GROSS	30480 Kgs
	PAYLOAD	26830 Kgs

## NOTES

- (1). Tolerance range for each dimension & rating as per ISO 668 Standards
- (2). Multiple Door Opening Options can be made available as per customer's requirement
- (3). Specification and Testing as per ISO 1496-1 Series 1 Freight Containers - Part 1: General Cargo Containers for General Purposes
- (4). Higher Gross Weight Containers can be made available up to 36000 Kgs. as per customer's requirement
- (5). Custom made containers can be made available as per customer's specific requirement



+ 91 999811007



info@symcon.in



www.symcon.in



# 40' HIGH CUBE HEAVY DUTY



<b>INTERNAL</b>	<b>LENGTH</b>	11998mm
	<b>WIDTH</b>	2330mm
	<b>HEIGHT</b>	2655mm
<b>EXTERNAL</b>	<b>LENGTH</b>	12192mm
	<b>WIDTH</b>	2438mm
	<b>HEIGHT</b>	2896mm
<b>CAPACITY</b>	<b>VOLUME</b>	76.4 cum
	<b>TARE</b>	3900 Kgs
	<b>GROSS</b>	32500 Kgs
	<b>PAYLOAD</b>	28600 Kgs

## **NOTES**

- (1). Tolerance range for each dimension & rating as per ISO 668 Standards
- (2). Multiple Door Opening Options can be made available as per customer's requirement
- (3). Specification and Testing as per ISO 1496-1 Series 1 Freight Containers - Part 1: General Cargo Containers for General Purposes
- (4). Higher Gross Weight Containers can be made available up to 36000 Kgs. as per customer's requirement
- (5). Custom made containers can be made available as per customer's specific requirement



+ 91 999811007



info@symcon.in



www.symcon.in



# 20' HIGH CUBE SIDE ACCESS



<b>INTERNAL</b>	LENGTH	5867mm
	WIDTH	2330mm
	HEIGHT	2655mm
<b>EXTERNAL</b>	LENGTH	6058mm
	WIDTH	2438mm
	HEIGHT	2896mm
<b>DOOR</b>	WIDTH	2340mm
<b>(REAR)</b>	HEIGHT	2587mm
<b>DOOR</b>	WIDTH	2460mm
<b>(SIDES)</b>	HEIGHT	1510mm
<b>CAPACITY</b>	VOLUME	37.30 cum
	TARE	3100 Kgs
	GROSS	36500 Kgs
	PAYLOAD	33400 Kgs

## NOTES

\* For Container Train Operators / Container Train Application

- (1). Tolerance range for each dimension & rating as per ISO 668 Standards
- (2). Multiple Door Opening Options can be made available as per customer's requirement
- (3). Specification and Testing as per ISO 1496-1 Series 1 Freight Containers - Part 1: General Cargo Containers for General Purposes
- (4). Customized Gross Weight Containers can be made available as per customer's requirement
- (5). Custom made containers can be made available as per customer's specific requirement



+ 91 999811007



info@symcon.in



www.symcon.in



# 20' OPEN TOP



<b>INTERNAL</b>	LENGTH	5888mm
	WIDTH	2345mm
	HEIGHT	2315mm
<b>DOOR</b>	WIDTH	2286mm
	HEIGHT	2184mm
<b>CAPACITY</b>	VOLUME	32.0 cum
	TARE	2250 Kgs
	GROSS	30480 Kgs
	PAYLOAD	28230 Kgs

## **FEATURES**

1. Open top containers have an open top covered by a tarpaulin instead of a solid roof. This enables oversized cargo such as timber and scrap metal to be loaded from the top.
2. Open top containers normally also have end doors, like closed containers, to give flexibility for loading and unloading.
3. Lashing rings, to which the cargo may be secured, are installed in the upper and lower side rails and the corner posts. The lashing rings may take loads of up to 1,000 kg.
4. Packing and unpacking from above or through the doors by crane or crab
5. Tall Cargo



+ 91 999811007



info@symcon.in



www.symcon.in



# 20' STD FULL ACCESS



<b>INTERNAL</b>	LENGTH	5888mm
	WIDTH	2345mm
	HEIGHT	2350mm
<b>DOOR (REAR)</b>	WIDTH	2286mm
	HEIGHT	2261mm
<b>BOTH SIDE CLEAR ACCESS</b>	WIDTH	5794mm
	HEIGHT	2412mm
<b>CAPACITY</b>	VOLUME	33.0 cum
	TARE	2350 Kgs
	GROSS	30480 Kgs
	PAYLOAD	28130 Kgs

## FEATURES

The distinct feature of these containers is the full side access doors on both sides, enhancing ease of access, and allowing for swift loading and unloading of large items. This feature ensures unparalleled convenience and flexibility in storing bulky items or when frequent access to the contents is required.



+ 91 999811007



info@symcon.in



www.symcon.in



# 20' HIGH CUBE FULL ACCESS



<b>INTERNAL</b>	LENGTH	5888mm
	WIDTH	2345mm
	HEIGHT	2665mm
<b>DOOR (REAR)</b>	WIDTH	2286mm
	HEIGHT	2566mm
<b>EACH SIDE CLEAR ACCESS</b>	WIDTH	5794mm
	HEIGHT	2412mm
<b>CAPACITY</b>	VOLUME	37.3 cum
	TARE	2450 Kgs
	GROSS	30480 Kgs
	PAYLOAD	28030 Kgs

## FEATURES

The distinct feature of these containers is the full side access doors on both sides, enhancing ease of access, and allowing for swift loading and unloading of large items. This feature ensures unparalleled convenience and flexibility in storing bulky items or when frequent access to the contents is required.



+ 91 999811007



info@symcon.in



www.symcon.in





# 20' DRY BULK | GRAIN CONTAINER



<b>INTERNAL</b>	LENGTH	5888mm
	WIDTH	2345mm
	HEIGHT	2665mm
<b>DOOR (REAR)</b>	WIDTH	2286mm
	HEIGHT	2566mm
<b>LOADING LATCHES</b>	QTY.	03 NOS.
	DIAMETER	455mm
	DISTANCE	1830mm
<b>CAPACITY</b>	VOLUME	33 cum
	TARE	2450 Kgs
	GROSS	24000 Kgs
	PAYLOAD	21550 Kgs

## **FEATURES**

1. Bulk containers are used in particular for transporting bulk cargo, such as grain, feedstuffs, spices.
2. However, they may also be used for transporting general cargo.
3. Lashing rings are mounted in the top side rails for securing the cargo.
4. Some bulk containers are equipped with forklift pockets, which allow handling by forklift trucks.
5. On the door side, there are two discharge hatches. Alternatively, two unloading hatches may be mounted in the doorways, for emptying the containers.



+ 91 999811007



info@symcon.in



www.symcon.in



# 20' FLATRACK



<b>INTERNAL</b>	LENGTH	6058mm
	WIDTH	2438mm
	HEIGHT	370mm
<b>DOOR</b>	WIDTH	0
	HEIGHT	0
<b>CAPACITY</b>	VOLUME	0
	TARE	2500 Kgs
	GROSS	30480 Kgs
	PAYLOAD	27980 Kgs

## **FEATURES**

1. Flatracks are mainly used to transport heavy-lifts and overheight or overwidth cargoes.
2. The End Walls may be Fixed Type OR COLLAPSIBLE Type as per Customer's requirement.
3. Lashing rings are installed in the side rails, corner posts and the floor. The lashing rings may take loads of up to 2,000 kg.
4. Forklift Pockets may be provided.



+ 91 999811007



info@symcon.in



www.symcon.in



# 20' GANTRY CRANE CONTAINER



<b>INTERNAL</b>	LENGTH	5898mm
	WIDTH	2230mm
	HEIGHT	2332mm
<b>DOOR (SIDE ACCESS)</b>	WIDTH	5833mm
	HEIGHT	2457mm
<b>GANTRY CRANE</b>	1 TON (ACROSS THE CONTAINER)	
<b>CAPACITY</b>	TARE	4600 Kgs
	GROSS	30480 Kgs
	PAYLOAD	25880 Kgs

## **FEATURES**

1. Allows one man operation to load and unload heavy items inside the container.
2. Side opening Gantry Container gives you the most access when loading with heavy items.
3. Gantry Container is comparable to an Overhead Crane which is fixed on the roof of the Container, designed for multi-axis operation with an overhead bridge.
4. Arm of the Crane can extend outside of the Container to pick up heavy items.



+ 91 999811007



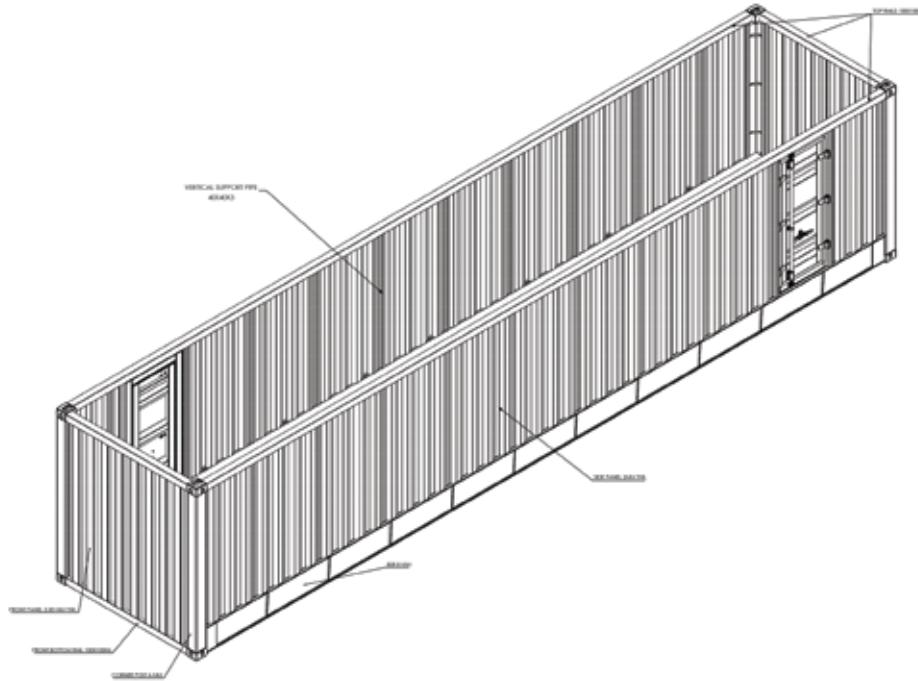
info@symcon.in



www.symcon.in



# 40' OPEN TOP GROOVE CONTAINER



<b>INTERNAL</b>	LENGTH	12090mm
	WIDTH	2330mm
	HEIGHT (MAX)	2333mm
	HEIGHT (MIN)	2070mm
<b>DOOR</b>	WIDTH	759mm
	HEIGHT	1867mm
<b>CAPACITY</b>	TARE	6500 Kgs
	GROSS	63000 Kgs
	PAYLOAD	56500 Kgs

## **FEATURES**

1. Open Top Groove Containers are specifically used for Steel Coil Transportation by Container Train Operators.
2. A maximum of 03 Nos. Standard Steel Coil can be transported.
3. Grooves are especially designed to ensure appropriate load bearing of Steel Coils and transportation stability.
4. Base of the container is suitably reinforced to ensure load bearing of Steel Coils.
5. Chequered Plate on the base coupled with rubber on top ensures proper placement of Steel Coil
6. Appropriate Lashing Rings and Vertical Pipe Arrangement is provided to ensure safe transportation of Steel Coils.



+ 91 999811007



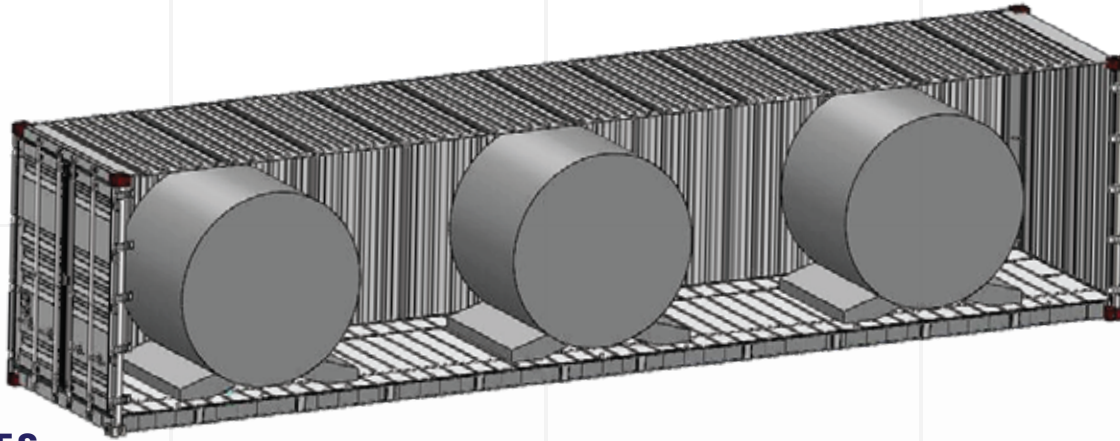
info@symcon.in



www.symcon.in



# 40' HIGH CUBE MULTIPURPOSE (COIL+GP) CONTAINER



<b>INTERNAL</b>	LENGTH	12090mm
	WIDTH	2330mm
	HEIGHT	2530mm
<b>DOOR</b>	WIDTH	1500mm
	HEIGHT	2225mm
<b>CAPACITY</b>	TARE	6500 Kgs
	GROSS	72000 Kgs
	PAYLOAD	65500 Kgs

## FEATURES

1. Container shall be good for Coil Transportation for payloads upto 65 Tons - Main application.
2. Container shall be good for General Purpose Dry Cargo for payloads upto 28 Tons - Optimum utilization / Multipurpose application.
3. Container has an on-demand detachable / attachable Rooftop assembly - ease of loading / unloading of Coils and/or voluminous cargo.
4. Rooftop attachment / detachment operation can be performed with the use of a regular KALMAR Crane - Labour friendly operation.
5. Additional 04 Nos. Corner Fittings are provided to facilitate on-demand attachment / detachment of Rooftop with the use of a regular KALMAR Crane - Simplified operation.
6. Rooftop attachment / detachment lock is operable from ground level with the help of 06 Nos. Rooftop Locking mechanism provided on each side of the Container - Labour friendly operation.
7. Container has an on-demand attachable / detachable Saddle arrangement to be used during Coil Transportation - Multipurpose use of Container.
8. Saddle attachment / detachment is possible with the help of regular Nut+Bolt (fasteners) - Labour friendly operation. No additional / special tools & equipment required.
9. Special Arrangement is provided within the Container to store / accommodate Saddles when not in use / during regular GP DC movement - Labour friendly operation.
10. Container has a low floor height maintained at 200mm from ground level - Labour friendly operation.
11. 02 Nos. Doors are provided with wider door opening of 1500mm x 2225mm on both sides (diagonally opposite locations) - quicker discharge / unloading.
12. Additional 02 Nos. Door Lock Mechanism Rod on each door leaf (LHS & RHS) - improved strength all around doors.
13. Increasing the BSR Gusset - 10 Nos. on each side - Better Base Strength.
14. Same profile design of Front Panel for Side Wall Panels as well - Improved SideWall Strength.
15. Floor is of 5mm chequered plate. Alternatively 25mm Ply + 5mm Chequered Plate can be offered.



+ 91 999811007



info@symcon.in



www.symcon.in



# 40' OPEN TOP



<b>INTERNAL</b>	LENGTH	12030mm
	WIDTH	2350mm
	HEIGHT	2380mm
<b>DOOR</b>	WIDTH	2340mm
	HEIGHT	2290mm
<b>CAPACITY</b>	VOLUME	66.4cum
	TARE	3850 Kgs
	GROSS	30480 Kgs
	PAYLOAD	26630 Kgs

## **FEATURES**

1. Open top containers have an open top covered by a tarpaulin instead of a solid roof. This enables oversized cargo such as timber and scrap metal to be loaded from the top.
2. Open top containers normally also have end doors, like closed containers, to give flexibility for loading and unloading.
3. Lashing rings, to which the cargo may be secured, are installed in the upper and lower side rails and the corner posts. The lashing rings may take loads of up to 1,000 kg.
4. Packing and unpacking from above or through the doors by crane or crab
5. Tall Cargo



+ 91 999811007



info@symcon.in



www.symcon.in



# 40' HIGH CUBE FULL ACCESS



<b>INTERNAL</b>	LENGTH	12003mm
	WIDTH	2350mm
	HEIGHT	2690mm
<b>DOOR (REAR)</b>	WIDTH	2340mm
	HEIGHT	2600mm
<b>EACH SIDE CLEAR ACCESS</b>	WIDTH	11960mm
	HEIGHT	2600mm
<b>CAPACITY</b>	VOLUME	76.04cum
	TARE	5800 Kgs
	GROSS	24000 Kgs
	PAYLOAD	18200 Kgs

## FEATURES

The distinct feature of these containers is the full side access doors on both sides, enhancing ease of access, and allowing for swift loading and unloading of large items. This feature ensures unparalleled convenience and flexibility in storing bulky items or when frequent access to the contents is required.



+ 91 999811007



info@symcon.in



www.symcon.in



# 40' FLAT TRACK



<b>INTERNAL</b>	LENGTH	11832mm
	WIDTH	2228mm
	HEIGHT	1981mm
<b>DOOR</b>	WIDTH	0
	HEIGHT	0
<b>CAPACITY</b>	VOLUME	0
	TARE	4200 Kgs
	GROSS	45000 Kgs
	PAYLOAD	40800 Kgs

## FEATURES

1. Flatracks are mainly used to transport heavy-lifts and overheight or overwidth cargoes.
2. The End Walls may be Fixed Type OR COLLAPSIBLE Type as per Customer's requirement.
3. Lashing rings are installed in the side rails, corner posts and the floor. The lashing rings may take loads of up to 2,000 kg.
4. Forklift Pockets may be provided.



+ 91 999811007



info@symcon.in



www.symcon.in





# 40' PLATFORM



<b>INTERNAL</b>	LENGTH	12192mm
	WIDTH	2245mm
	HEIGHT	648mm
<b>DOOR</b>	WIDTH	0
	HEIGHT	0
<b>CAPACITY</b>	VOLUME	0
	TARE	5700 Kgs
	GROSS	45000 Kgs
	PAYLOAD	39300 Kgs

## FEATURES

1. Platforms are used principally for oversized and very heavy cargoes.
2. A platform consists of a steel frame and a wooden floor structure.
3. Platforms consist solely of a floor structure with extremely high loading capacity; they have no side or end walls.
4. This high loading capacity makes it possible to concentrate heavy weights on small areas.
5. Lashing rings, to which the cargo may be secured, are installed in the side rails. The lashing rings may take loads of up to 3.000 kg.



+ 91 999811007



info@symcon.in



www.symcon.in



# SYMCON<sup>®</sup>

 + 91 999811007

 [info@symcon.in](mailto:info@symcon.in)

 [www.symcon.in](http://www.symcon.in)

 [company/symcon-industries-pvt-ltd/mycompany/](https://www.linkedin.com/company/symcon-industries-pvt-ltd/mycompany/)

**YOUR GATEWAY TO “MADE IN INDIA”  
SHIPPING CONTAINERS**